

A photograph of two scientists in a laboratory setting. They are both wearing white lab coats and glasses. The scientist on the right is wearing green gloves and is using a pipette to transfer liquid into a small vial. The scientist on the left is looking at the vial. The background is a blurred laboratory environment with various pieces of equipment.

Improving diagnostics

Working together
to protect animal
and human health

INDICAL
BIOSCIENCE



Nothing matters more

INDICAL is a leading solution provider for diagnostic workflows, the protocols for their use, and the support that empowers our customers every day. Our customers play a central role in protecting the health of animals and humans worldwide – that is why nothing matters more to us than improving your ability to do so.

Our Mission:
Improving diagnostics
to protect animal and
human health together.

Beginning in 1996 as Labor Diagnostik Leipzig (LDL), we have been passionately serving and working closely with private and state diagnostic laboratories to drive innovation that raises standards. As a committed partner, we look at the world from our customers' perspective – ensuring they can produce reliable results today, and have certainty for the future. The 2012 acquisition of LDL by QIAGEN, a leader in molecular diagnostics and life sciences, proved our successes and strengthened our capabilities. Through an innovation-based strategic alliance, we are able to build on state-of-the-art diagnostic technologies to develop solutions specifically for the veterinary sector.

Today, INDICAL is an independent company with renewed focus and ambition to pursue our Mission with even greater impact.

Improving diagnostics together

Rapid innovation

Innovating with customers to improve existing techniques, develop new technologies, and respond quickly to emerging threats.



Exceptional support

Supporting our customers' adoption of new technologies to help improve test accuracy, workflow efficiency, and supply certainty.



Improving diagnostics begins with redefining reliability

As diagnostic testing evolves, and growing demand for animal-based products increases the complexity and scale of threats from disease, labs are pressed to match the pace of change. To fulfil the needs of your customers, you need reliable results faster and more efficiently. Ensuring reliability, now more than ever, means more than consistently accurate testing. It means looking beyond products to optimizing the most important aspects of lab operations.



Improving the specificity, selectivity, and sensitivity of tests, while maintaining and surpassing standards in the countries we serve.



Improving protocols to increase the versatility and speed of lab operations – always ensuring compliant, smooth transitions to new ways of working.



Improving supply management to reduce waste and ensure availability during outbreaks – reliably delivering when and where our customers need us.



Engineering accuracy into every step

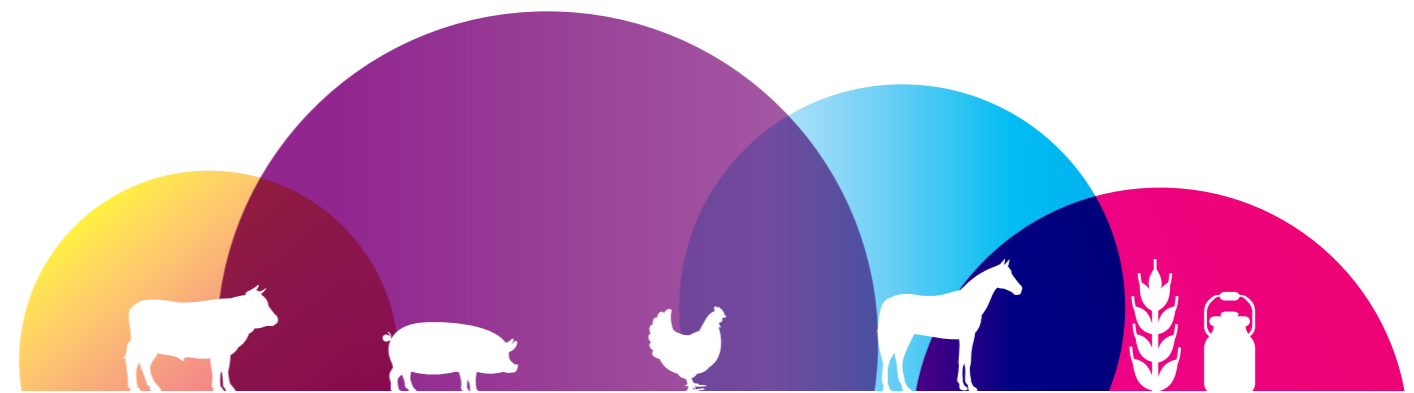
Being relied upon for accurate testing every day requires absolute confidence in the results produced. That is why we work hands-on in our lab, and with our customers, to refine every step of the testing process, improving test accuracy and reliability to ensure the results produced can be counted on.

From sensitivity improvements gained through new ELISA concepts, to true PCR multiplexing for the simultaneous detection of weak and strong co-infections, we have developed industry-leading diagnostic solutions that span sample preparation to result.

Produced at our world-class facility in Leipzig, Germany, our extensive ELISA and PCR portfolios bring the latest technology and development to laboratories.

INDICAL provides solutions for the entire workflow, across a range of applications.

- Sample Preparation
- Assays
- Instruments
- Analysis



Ruminants

Swine

Poultry

Equine

Food & Dairy



Test the way that is best for you

Rarely does the day feel long enough to address all testing needs in the time available. We obsess over your needs to develop and improve workflows, enabling you to enhance your performance in meaningful ways.

Our understanding of how labs work sets us apart. From the development of faster diagnostic protocols with fewer handling steps, to the design and implementation of automation solutions, we operate at the intersection of molecular diagnostics and vet-specific applications to innovate in areas specific to your needs.

Our proven workflows are a valuable tool in removing bottlenecks and optimizing testing for how you work – so you can test the way that is best for you.

How we are improving workflow efficiency:

- Faster protocols with fewer handling steps
- Overnight protocols to utilize time away from the lab
- High-volume protocols for test pooling



Serious about supply

Product availability can be a crucial factor in response time during outbreaks, while on a normal day, supply management can take valuable time away from the most important tasks. That is why we take the reliable supply of our kits seriously.

In addition to growing our teams globally, we develop strong partnerships with local distributors in the countries we serve, to get as close to our customers as possible – so we can improve diagnostics together, no matter where you are located.

To ensure you can always perform the tests you need, we monitor your usage to be sure your most-used products are in stock, and offer prompt, reliable worldwide delivery. In instances where response time is critical, our production and logistics management is flexible enough to ensure delivery, so you can ramp up testing when circumstances require it.

How we are improving supply:

- Supply management based on your usage
- Safety product stock for reliable access during outbreaks
- Global distribution network for fast worldwide delivery



Supporting customers to improve diagnostics

Industry-leading support

We are extremely passionate about supporting our customers to do what they do best. From advising on the implementation of automation solutions, to developing unique test kits and protocols, we are proud to offer industry-leading support that helps smooth adoption and enhances testing performance – so you can provide increasingly reliable testing every day.

INDICAL Academy

Sharing our expertise is a core part of how we work together with customers to improve diagnostics. INDICAL Academy provides an extensive range of evidence-based, scientifically sound courses aimed at lifting standards across the industry. In addition, our experts actively participate in seminars and events around the world, speaking on a number of industry-wide topics and specialized subjects.

INDICAL Certification

INDICAL certification programs are aimed at enhancing the skills of professionals, ensuring they can take advantage of the latest developments in diagnostic testing. Our aim is to build a global community of certified professionals, focused on improving diagnostics to protect animal and human health together.

INDICAL is focused on improving diagnostics to protect animal and human health together.

As diagnostic testing evolves, we work with our customers to increase the pace of innovation based on their needs, and support them to adopt advancements that help them perform at their best.

For over two decades, our expert team has redefined reliability within diagnostic testing by increasing test accuracy, improving workflow efficiency, and ensuring supply in times of need – so you can produce reliable results today, and have certainty for the future.

Learn more at www.indical.com